

Using innovative technology to create cost-effective, compact and uncomplicated packaging systems that protect your products

Universal Systems - Advanced 2-8°C Control Without Preconditioning

Available in 48-Hour and 96-Hour systems

Universal Systems are refrigerated shippers that combine evaporative cooling technology with phase change material (PCM) to ensure the integrity of your products. When combined, the steady evaporative cooling effect is augmented by the PCM component to protect against external temperature spikes.

NanoCool's evaporative cooling is seven times more powerful than gel packs or ice. It works by transferring internal heat to the outside through evaporation of a small amount of water stored at low pressure inside the package. Evaporation takes place at low temperatures and creates a powerful cooling effect. NanoCool's active cooling process adjusts to variations in ambient temperature in a way that conventional cooling systems cannot.

Advantages

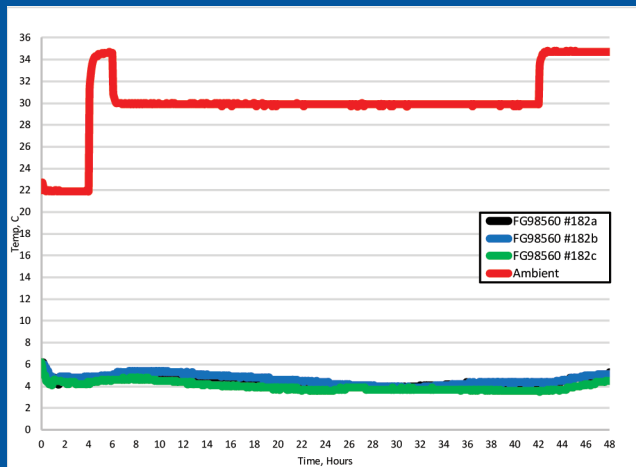
Because the cooling engine is built into the lid with no gel packs, Universal Systems are much smaller and lighter than traditional refrigerated shipping systems.

This translates to:

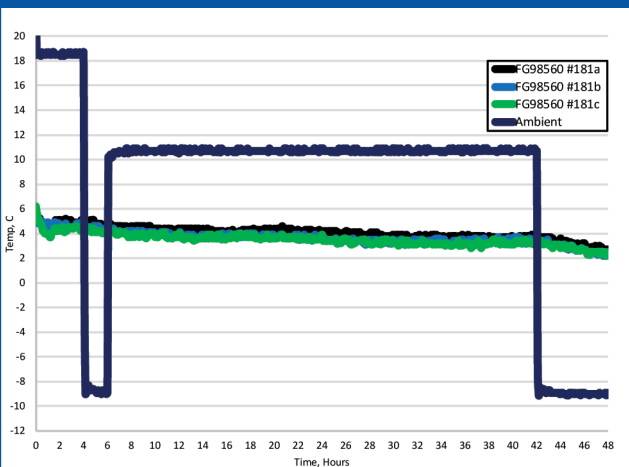
- Reduced freight expenses
- Lower inventory costs
- Less warehouse storage space
- No need for freezers or refrigerators



Universal System 48-Hour Summer Qualification Graph



Universal System 48-Hour Winter Qualification Graph



NanoCool® *A Cool Revolution in Product Transport*

Activating a Universal System is as easy as 1 – 2 – 3

Easily portable, NanoCool 2-8°C systems arrive ready to activate and ship. There's no need to freeze and condition gel packs (or worry about whether gel packs have been conditioned or packed correctly).



1. Open box, remove cooling engine and place silver foil side down on a flat surface. Push straight down on the activation button.



2. Notice the NanoCool logo turning blue between 30 seconds and 3 minutes indicating cooling has begun. Confirm by touching the surface of the cooling engine near the activation button.



3. Load product into the payload compartment, replace the cooling engine, close the box and tape shut prior to shipping.

Ordering Information

Product	Temperature (Celsius)	Duration (Hours)	Outer dimensions (millimeters) (inches)	Usable space (millimeters) (inches)	Weight (kilograms) (pounds)	Dim weight (pounds)
2-85361	2-8°	48	307 x 201 x 215 12.1 x 7.9 x 8.5	216 x 119 x 76 8.5 x 4.7 x 3.0	3.4 7.5	7
Long Haul 2-85396	2-8°	96	307 x 201 x 251 12.1 x 7.9 x 9.9	216 x 119 x 69 8.5 x 4.7 x 2.7	4.3 9.4	7
2-98560	2-8°	48	352 x 305 x 262 13.9 x 12 x 10.3	241 x 221 x 114 9.5 x 8.7 x 4.5	5.5 11.8	13
Long Haul 2-98596	2-8°	96	360 x 305 x 305 14.2 x 12 x 12	241 x 221 x 122 9.5 x 8.7 x 4.8	7.8 17.2	15