

ChillTech® Regional and Global



Our new ChillTech systems use an organic PCM to provide the highest level of +2°C to +8°C protection. ChillTech Regional combines PCM with lightweight EPS insulation and for extra protection for extreme ambient conditions, ChillTech Global offers a combination of high performance VIPs and EPS.

- Fully qualified range of +2°C to +8°C PCM shipping systems tested to ISTA temperature profiles from the 7D and 7E Series
- Uses **ChillPhase**, our sustainably sourced organic PCM which delivers reliable and robust temperature control, even in the most challenging of conditions
- If cargo is refrigerated during transit, PCM will hibernate and re-activate when ambient temperatures rise again, prolonging the service duration of the system
- **ChillTech** Regional systems use PCM and EPS to offer protection for 72+ hours
- **ChillTech** Global combines PCM, EPS and Vacuum Insulation Panels (VIPs) to offer superior protection for 96+ hours
- 4 sizes in each range with common **ChillPhase** packs used across each size option to minimise stockholding
- All year packing configuration simplifies pack out
- Euro pallet compatible footprints for efficient shipping and storage

Chill +2°C to +8°C	Ambi +15°C to +25°C	Climi +2°C to +25°C	Freeze 0°C to -80°C
------------------------------	-------------------------------	-------------------------------	-------------------------------

ChillTech® Regional and Global

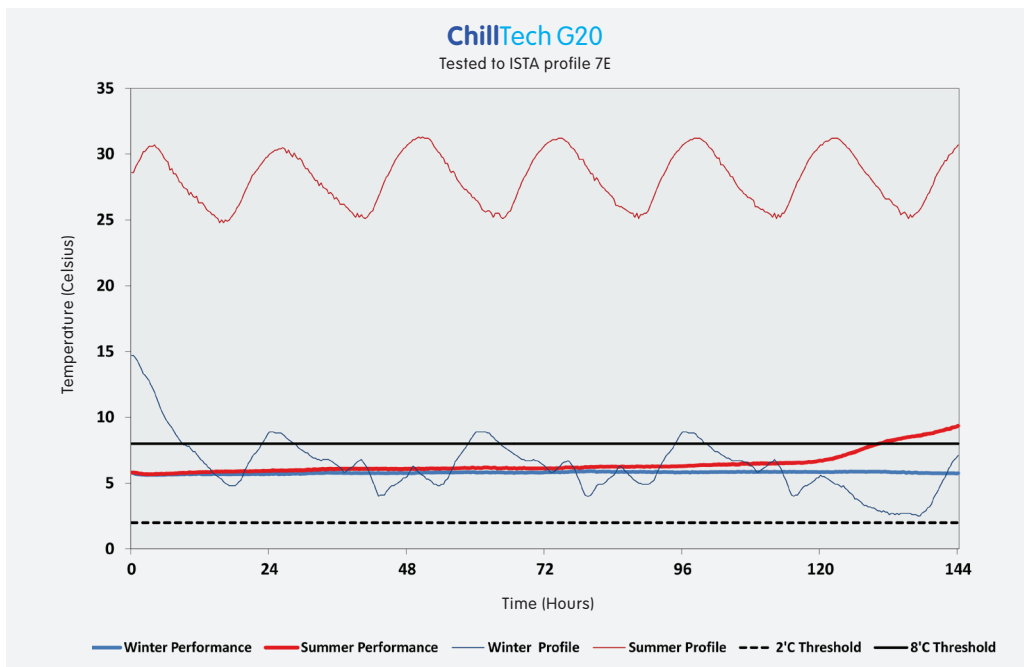


Phase Change Materials (PCMs) are substances that absorb and release thermal energy during the process of melting and freezing. When a PCM freezes, it releases a large amount of energy in the form of latent heat. When it melts, it absorbs a large amount of heat from the environment. PCMs recharge as ambient temperature fluctuates, making them ideal for temperature control applications.

ChillTech Regional and Global Range

ChillTech Product	External Dimensions (mm)	Payload Dimensions (mm)	Payload Volume (l)	Tare Weight (kg)	Volumetric Weight (kg)
ChillTech R5	400 x 400 x 300	223 x 223 x 108	5.4	6.4	8.0
ChillTech R10	400 x 400 x 400	223 x 223 x 208	10.3	8.7	10.7
ChillTech R20	600 x 400 x 400	423 x 223 x 208	19.6	13.7	16.0
ChillTech R40	600 x 400 x 600	423 x 223 x 408	38.5	20.1	24.0
ChillTech G5	400 x 400 x 300	223 x 223 x 108	5.4	8.0	8.0
ChillTech G10	400 x 400 x 400	223 x 223 x 208	10.3	10.6	10.7
ChillTech G20	600 x 400 x 400	423 x 223 x 208	19.6	16.3	16.0
ChillTech G40	600 x 400 x 600	423 x 223 x 408	38.5	23.8	24.0

ChillTech G20 Test Profile Results



ChillTech G20 tested to ISTA 7E profile.

Test conditions:

- Test load – 64 x 1.6ml liquid vials (10 pack)
- Multiple thermocouples placed around the payload

Other profile results, including ISTA 7D, available on request.

Chill

+2°C to +8°C

Ambi

+15°C to +25°C

Climi

+2°C to +25°C

Freeze

0°C to -80°C