

ChillTherm® Global



ChillTherm Global systems offer +2°C to +8°C temperature control and are designed for customers who require shipping systems for extended durations or for transcontinental routes. All systems are pre-qualified and use gel based cool packs.

- Pre-qualified range of +2°C to +8°C systems designed for transcontinental routes
- Tested to a robust profiles including temperatures of between -20°C and +40°C
- Reports available without lengthy test and qualification projects
- All systems have been qualified with different payloads to simulate a variety of shipments
- Offer protection of up to 120 hours for cross hemisphere shipments
- Common componentry across a number of sizes
- On-site training and supporting documentation provided

Chill

+2°C to +8°C

Ambi

+15°C to +25°C

Climi

+2°C to +25°C

Freeze

0°C to -80°C

ChillTherm® Global

GEL PACKS

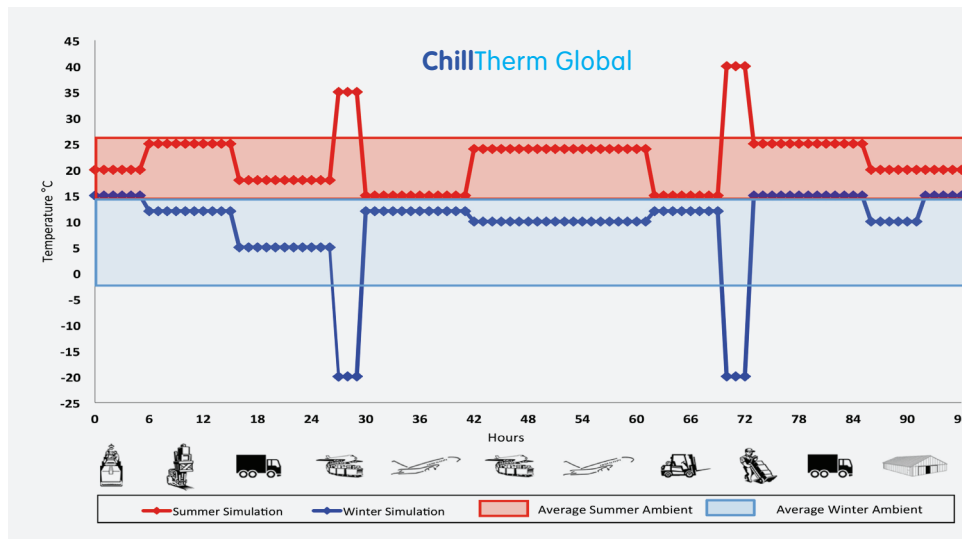
Meditrays are a range of gel-based cool packs used across a number of our products. They use a water-based non-toxic formula and are sealed with a strong and highly puncture resistant multi-layer film to ensure they don't leak.

ChillTherm Global Range

ChillTherm Product	External Dimensions (mm)	Payload Dimensions (mm)	Payload Volume (l)	Tare Weight (kg)	Volumetric Weight (kg)
ChillTherm G4	470 x 470 x 410	250 x 143 x 110	3.9	13.6	15.1
ChillTherm G9	571 x 515 x 441	315 x 160 x 180	9.1	21.7	21.6
ChillTherm G11	470 x 470 x 660	243 x 143 x 316	11.0	21.9	24.3
ChillTherm G22	571 x 515 x 719	286 x 177 x 428	21.7	37.8	35.2
ChillTherm G52	826 x 616 x 804	428 x 338 x 360	52.1	51.5	68.2
ChillTherm G94	855 x 632 x 1091	428 x 338 x 650	94.0	75.1	98.3
ChillTherm G131	1224 x 812 x 877*	815 x 454 x 354	130.9	76.4	145.3*
ChillTherm G242	1224 x 812 x 1175*	815 x 454 x 655	242.4	119.8	194.6*

*Incl pallet

ChillTherm Global Test Profile



ChillTherm Global tested to Ambient profile.

Test conditions:

- 32-2000 x 5.0ml liquid-filled vials (depending on size)
- Multiple thermocouples placed around the payload

Full qualification data available upon request.

Other products from our Chilled Range:

ChillTherm

- 48 to 96 hours
- 4-180 litres

ChillTherm National

- 24 to 36 hours
- 2-47 litres

ChillTherm Regional

- 48 to 72 hours
- 3-266 litres

ChillTech PCM

- 72+ hours
- 5-40 litres

Chill

+2°C to +8°C

Ambi

+15°C to +25°C

Climi

+2°C to +25°C

Freeze

0°C to -80°C